

KARIBAN

REFERENCE : K517

SIZES : S_M_L_XL_XXL_3XL

COMPOSITION :

Main fabric : Cotton poplin 110 100%cotton

Fabric 1 : Y/D Cotton poplin - 110 Striped fabric

For inner collar band, inner cuff and inner front tab 100%cotton

WEIGHT :

Main fabric : 110 gsm

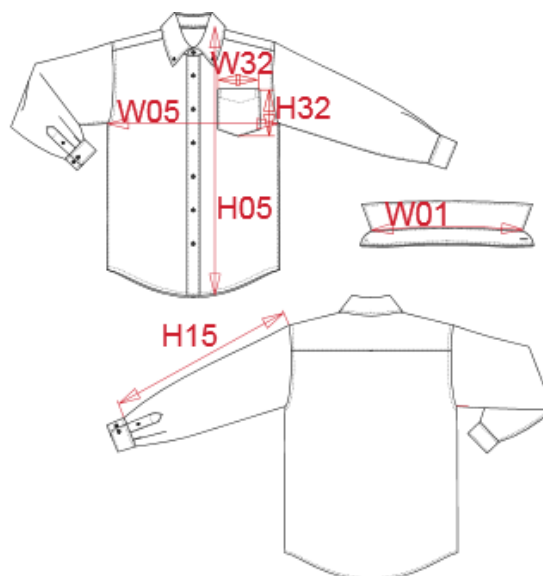
Fabric 1 : 110 gsm

TECHNICAL DETAIL :

Garment washed

ARTICLE WEIGHT :

240 gr/pc



DESCRIPTION
Français : Chemise popeline lavée manches longues homme
English : Men's long sleeve washed popeline shirt
Nederlands :
Deutsch : PFLEGELEICHTES POPELINE HERREN LANGARM HEMD
Español : CAMISA DE MANGA LARGA POPELINA LAVADA PARA HOMBRE
Italiano : CAMICIA UOMO POPELINE MANICHE LUNGHE
Português : Camisa manga comprida em popeline pré lavada

COLORS	PANTONE SERIGRAPHIE
White	White
Navy	433C

MEASUREMENT						
Description	S	M	L	XL	XXL	3XL
W01 Longueur encolure / Neckline length	41,25	42,50	43,75	45	46,25	47,50
W05 1/2 largeur poitrine / 1/2 chest width	51	54	57	60	63	66
H05 Hauteur totale dos / Back total height	76	78	80	82	84	86
H16 Longueur dessous de manche sans poignet / Under sleeve length without cuff	47,30	47,80	48,30	48,80	49,30	49,80
H32 Hauteur poche devant / Front pocket height	13	13	14	14	15	15
W32 Largeur poche devant / Front pocket width	12	12	13	13	14	14

CARE LABEL

PACKING	
Box	12 pcs / box S => L:60cm W:40cm H:20cm GW:4.97kg NW:3.32kg M => L:60cm W:40cm H:20cm GW:5.12kg NW:3.47kg L => L:60cm W:40cm H:20cm GW:5.30kg NW:3.65kg XL => L:60cm W:40cm H:20cm GW:5.40kg NW:3.75kg XXL => L:60cm W:40cm H:20cm GW:5.51kg NW:3.86kg 3XL => L:60cm W:40cm H:20cm GW:5.70kg NW:4.05kg