

# B&C OXFORD SSL /WOMEN - SW 004

THE SHIRT CULTURE  
BE INSPIRED



## ADJUSTED FIT

- Cotton rich polycotton Oxford fabric with **Easy Care** finish
- Soft feminine collar
- Cross stitched mother-of-pearl effect buttons (except Oxford Blue: mother-of-pearl effect white buttons)
- Short sleeves with narrow cuffs
- Darts at bustline & back panel for a feminine shape
- Horizontal last buttonhole
- Curved bottom hem



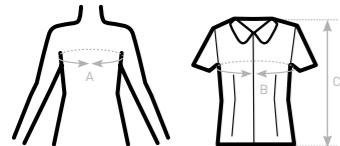
- 70% **combed** cotton - 30% polyester
- Oxford
- 135 g/m<sup>2</sup> **EASY CARE**
- XS > 6XL
- 1 pc/pack & 10 pcs/carton



**DUO CONCEPT**  
with B&C Oxford SSL /men

### SIZES [CM]

B&C OXFORD SSL /W. SW 004		US	XS	S	M	L	XL	2XL	3XL	4XL	5XL	6XL
A	DRESS SIZE	FR	36	38	40	42	44	46	48	50	52	54
		IT	40	42	44	46	48	50	52	54	56	58
		EU	34	36	38	40	42	44	46	48	50	52
		UK	8	10	12	14	16	18	20	22	24	26
B	CHEST SIZE	CM	91	96	101	106	111	116	121	126	131	136
C	CENTER BACK LENGTH	CM	65	66	67	68	69	70	71	72	73	74



THE SHIRT CULTURE  
BE INSPIRED

## WOMEN'S SHORT SLEEVED EASY CARE OXFORD SHIRT **EASY CARE**

